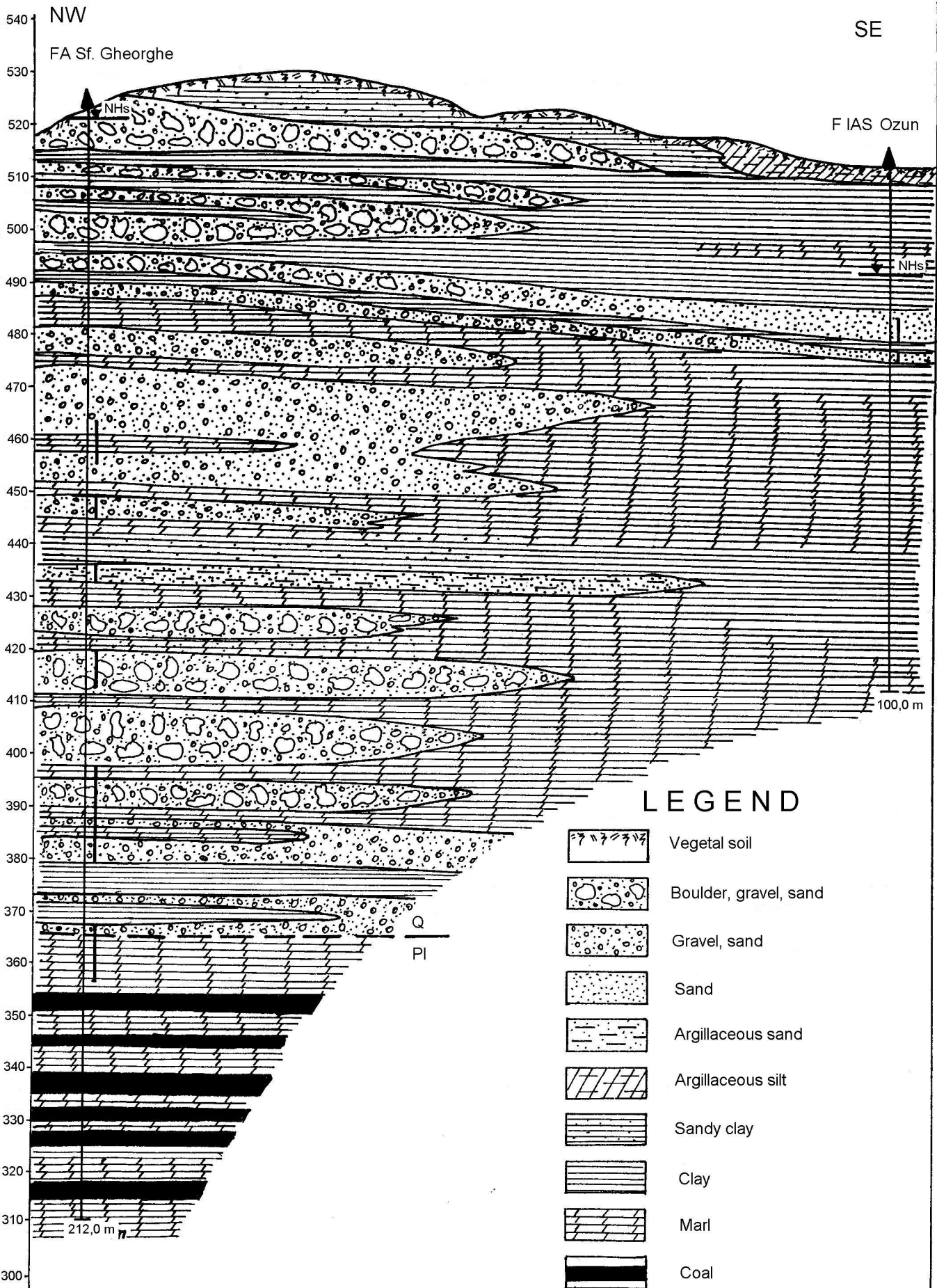
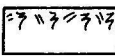



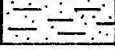
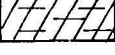
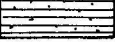
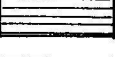
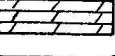


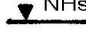
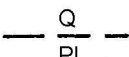


CROSS SECTION A-A'



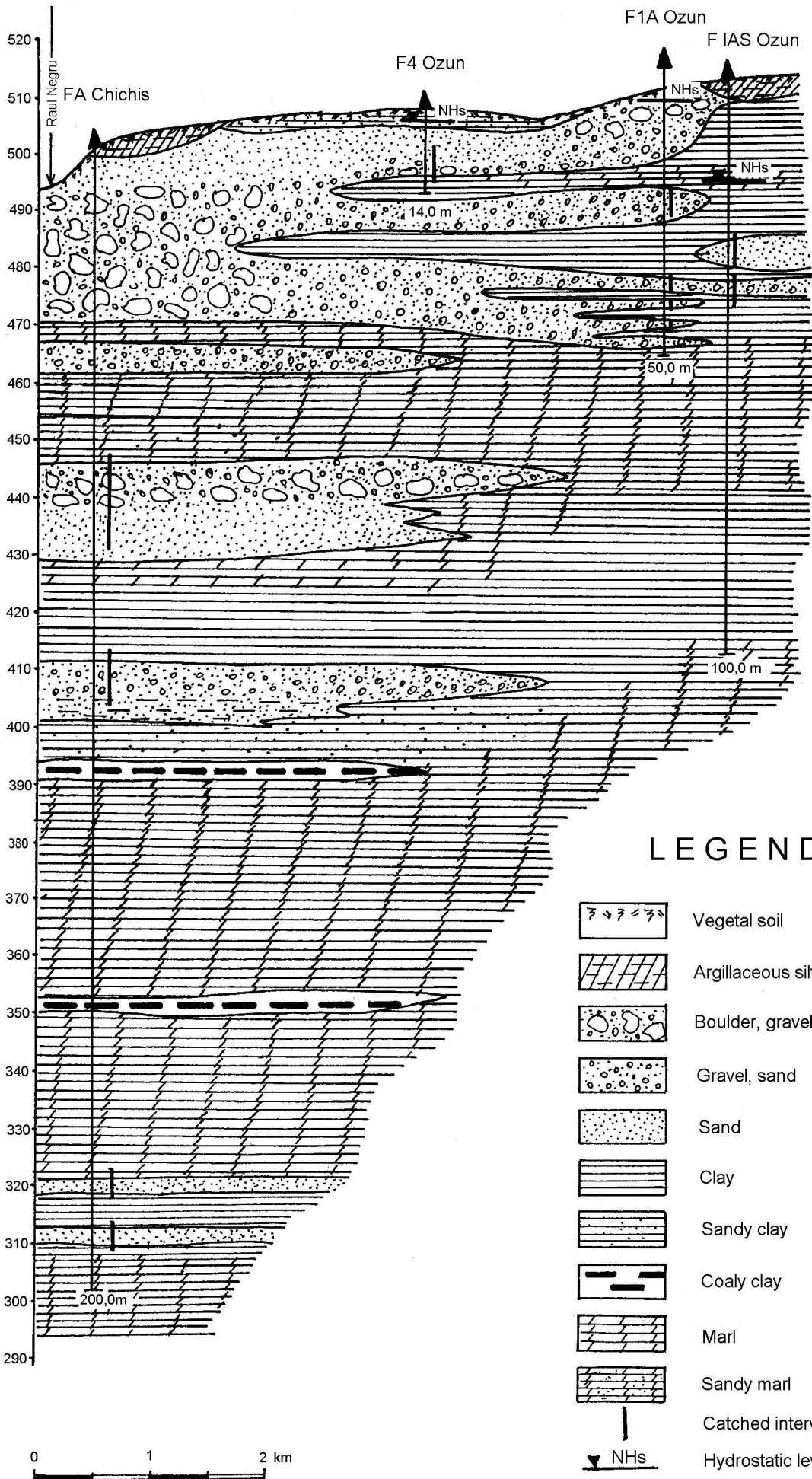
LEGEND

-  Vegetal soil
-  Boulder, gravel, sand
-  Gravel, sand
-  Sand
-  Argillaceous sand
-  Argillaceous silt
-  Sandy clay
-  Clay
-  Marl
-  Coal
-  Caught interval
-  NHs Hydrostatic level
-  Q / PI Pliocene (Romanian) - Quaternary boundary

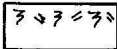


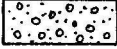
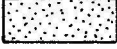
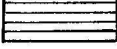
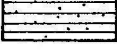
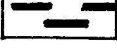

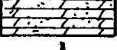


CROSS SECTION B-B'

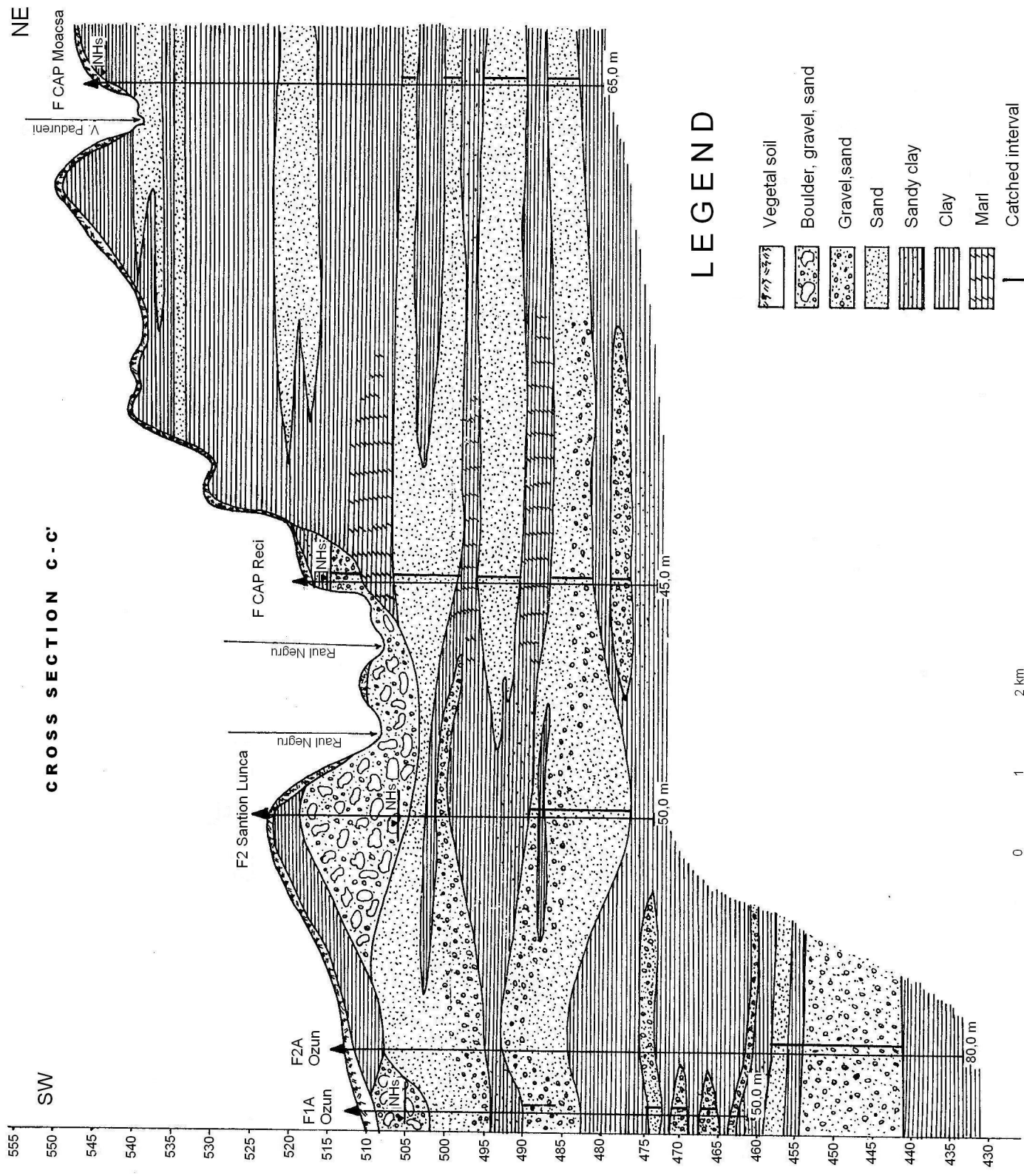
SW

NE

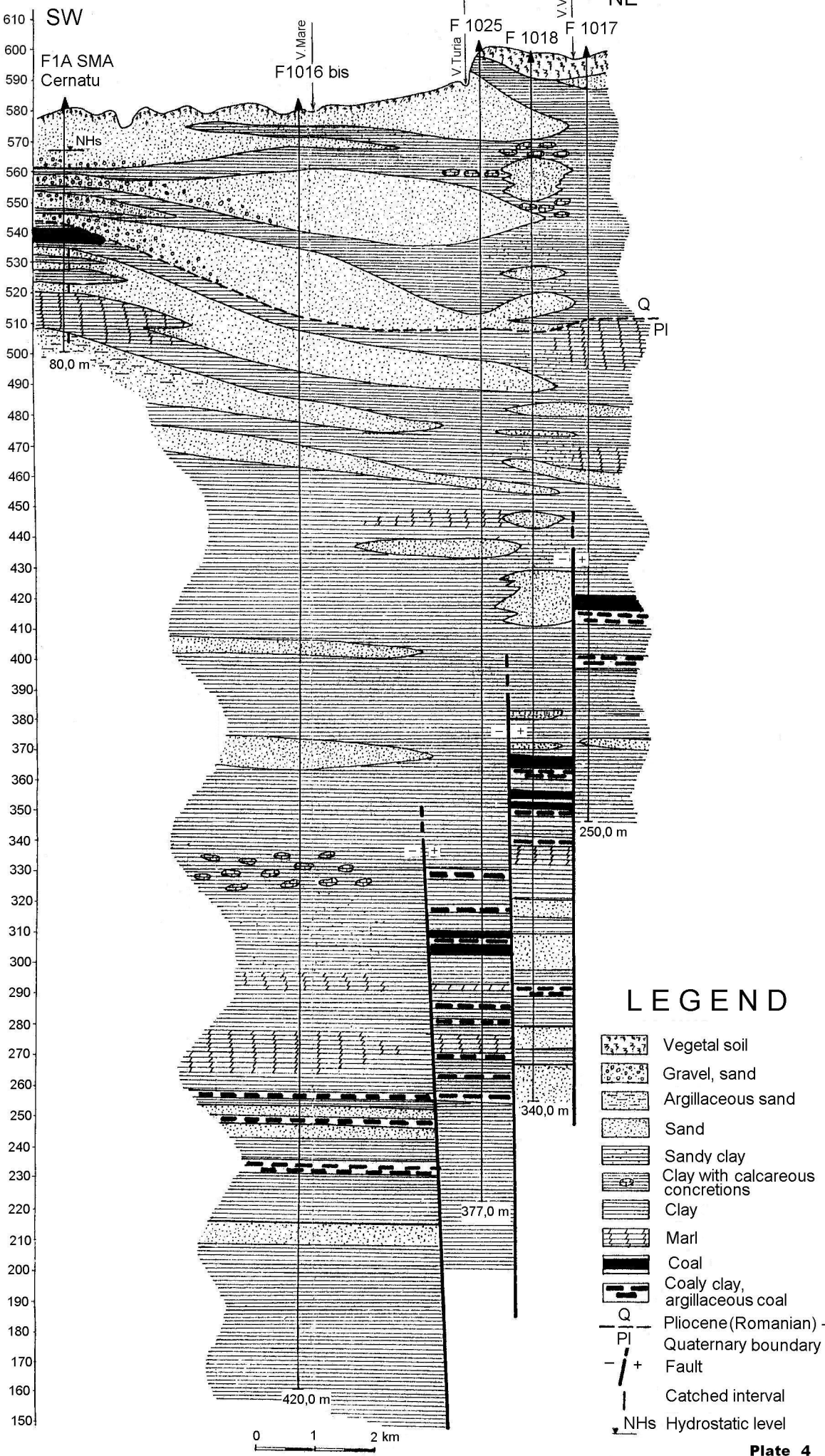


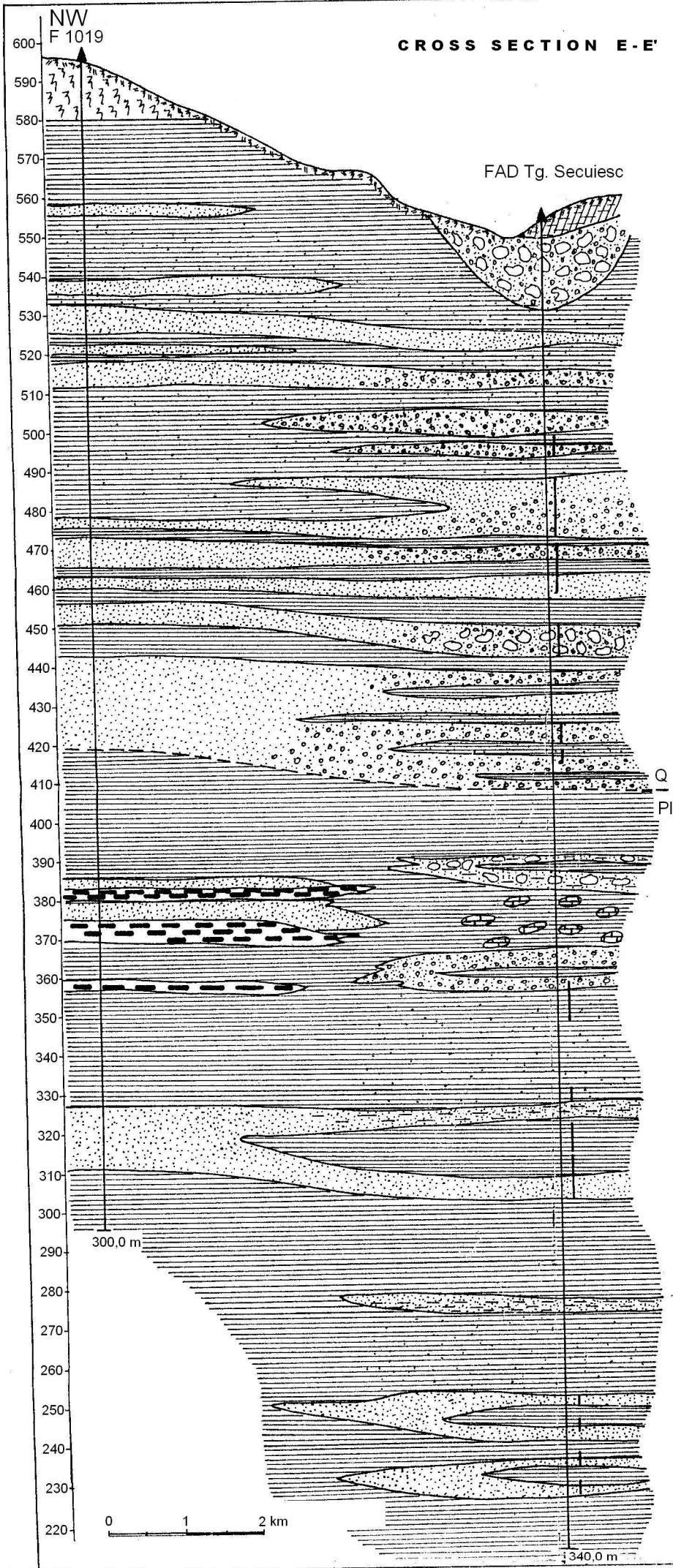
LEGEND

-  Vegetal soil
-  Argillaceous silt
-  Boulder, gravel, sand
-  Gravel, sand
-  Sand
-  Clay
-  Sandy clay
-  Coaly clay
-  Marl
-  Sandy marl
-  Caught interval
-  Hydrostatic level

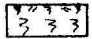
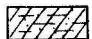

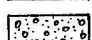
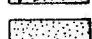
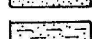
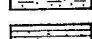
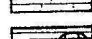
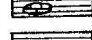
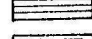
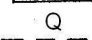



CROSS SECTION D-D'





LEGEND

-  Vegetal soil
-  Argillaceous sandy silt
-  Boulder, gravel, sand
-  Gravel, sand
-  Sand
-  Clayey sand
-  Sandy clay
-  Clay with calcareous concretions
-  Clay
-  Coaly clay, clayey coal
-  Pliocene (Romanian) - Quaternary boundary
-  Caught interval